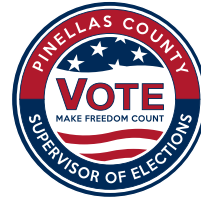


**JULIE MARCUS
SUPERVISOR OF ELECTIONS
PINELLAS COUNTY**

This publication is also available in Spanish. Pinellas County is a covered jurisdiction under the Language Minority Groups provision of the Voting Rights Act.

Pinellas County complies with the Americans with Disabilities Act. To obtain accessible formats of this document, call (727) 464-VOTE (8683). If using TDD, contact the Florida Relay Service at 1 (800) 955-8771.



Information in this Voter Handbook is current as of September 2023. A copy of this voter guide is available for download at VotePinellas.gov. For updated election information between publications, please visit VotePinellas.gov.

2024 - 2025 VOTER HANDBOOK

For updated election information

Phone: 727-464-VOTE (8683)

Email: Election@VotePinellas.gov

Website: VotePinellas.gov/Election-Information



**JULIE MARCUS
SUPERVISOR OF ELECTIONS
PINELLAS COUNTY**

RV 9-23

Welcome to the 2024 - 2025 Pinellas County Voter Handbook

Dear Voter,

We're thrilled to present to you this handbook that will provide you with everything you need to know about voting in Pinellas County! This handbook features important dates for upcoming elections, as well as easy-to-follow instructions on how to update your voter registration information and how to request a mail ballot. We've also included some helpful tips on what to expect if you're voting early or on Election Day.

Please take a moment to read through the Frequently Asked Questions section, your Voter Rights and Responsibilities, and other important voting information. With this knowledge, you'll be well on your way to getting Election Ready.



Julie Marcus
Supervisor of Elections
Pinellas County



SUPERVISOR OF ELECTIONS OFFICES

PINELLAS COUNTY COURTHOUSE

315 Court St., Room 117, Clearwater, FL 33756
P: (727) 464-VOTE (8683) / F: (727) 464-4158

ELECTION SERVICE CENTER (ESC)

Starkey Lakes Corporate Center
13001 Starkey Rd., Largo, FL 33773
P: (727) 464-VOTE (8683) / F: (727) 464-6239

COUNTY BUILDING

501 First Avenue North, St. Petersburg, FL 33701
(Entrance on 5th St. N.)
P: (727) 464-VOTE (8683) / F: (727) 582-7798

Visit VotePinellas.gov for:

- Upcoming Election Information
- Voter Registration Status
- Tracking Your Mail Ballot
- Polling Place Locations
- Sample Ballots
- Early Voting Locations & Wait Times
- Becoming a Poll Worker
- Elected Officials
- Voter Statistics

Stay Social with #VotePinellas

2024 Elections

March 19, 2024 Presidential Preference Primary & Municipal Elections

- **Registration Deadline:** February 20
(February 19 is President's Day)
- **Early Voting:** March 9 - 17*
- *M - F, 8 a.m. - 6 p.m.; S - S, 8 a.m. - 5 p.m.*

August 20, 2024 Primary Election

- **Registration Deadline:** July 22
- **Early Voting:** August 10 - 18*
- *M - F, 8 a.m. - 6 p.m.; S - S, 8 a.m. - 5 p.m.*

November 5, 2024 General Election

- **Registration Deadline:** October 7
- **Early Voting:** October 21 - November 3*
- *Daily, 7 a.m. - 7 p.m.*

2025 Elections

March 11, 2025 Municipal Elections

- **Registration Deadline:** February 10

November 4, 2025 Municipal Elections

- **Registration Deadline:** October 6

**For a list of Early Voting locations,
go to VotePinellas.gov*

*Early voting is not conducted for municipal
elections.*

Table of Contents

Voter Signature Updates.....	4
Voter Registration & Requirements	4
Photo and Signature ID	5
Florida's Primary Elections	5
Requesting a Mail Ballot	6
Returning Your Voted Mail Ballot	6
Picking Up Someone Else's Ballot	7
What to Expect at the Polls.....	8
Frequently Asked Questions	10
Voters with Disabilities	12
Voter Rights and Responsibilities	13
Election Deadlines & Early Voting Dates.....	14
Contact Information and Website	15

VOTER SIGNATURE UPDATES

- It is important to have your updated signature in our voter file. This is the signature on file that must match your signature at the polls or on a mail ballot certificate envelope in order to count your ballot. This signature on file is also used to verify your signature on a candidate or initiative petition.
- Update your signature by filling out and submitting the Voter Registration Application at VotePinellas.gov.

VOTER REQUIREMENTS (F.S. 97.041)

- You must be a United States citizen.
- You must be at least 18 years old; or you may pre-register if you are 16 or 17 years old.
- You must have no current court judgment of mental incapacity with respect to voting in Florida or another state.
- You must have no felony conviction, or your right to vote has been restored by law if ever convicted of a felony.

VOTER REGISTRATION APPLICATION LOCATIONS

- VotePinellas.gov
- Supervisor of Elections offices (see pg. 15)
- Tax Collector offices
- Public libraries
- Public assistance offices
- Offices that serve people with disabilities
- Armed forces recruitment offices
- Centers for independent living

Pick up an application at any of the above locations. Complete and return it to any Supervisor of Elections Office in person or by mail.

ONLINE VOTER REGISTRATION APPLICATION

You may register to vote or update your voter registration information using the Florida Online Voter Registration Application.

Visit VotePinellas.gov/OnlineRegistration

VOTER'S BILL OF RIGHTS (F.S. 101.031)

Each registered voter in this state has the right to:

1. Vote and have his or her vote accurately counted.
2. Cast a vote if he or she is in line at the official closing of the polls in that county.
3. Ask for and receive assistance in voting.
4. Receive up to two replacement ballots if he or she makes a mistake prior to the ballot being cast.
5. An explanation if his or her registration or identity is in question.
6. If his or her registration or identity is in question, cast a provisional ballot.
7. Written instructions to use when voting, and upon request, oral instructions in voting from elections officers.
8. Vote free from coercion or intimidation by elections officers or any other person.
9. Vote on a voting system that is in working condition and that will allow votes to be accurately cast.

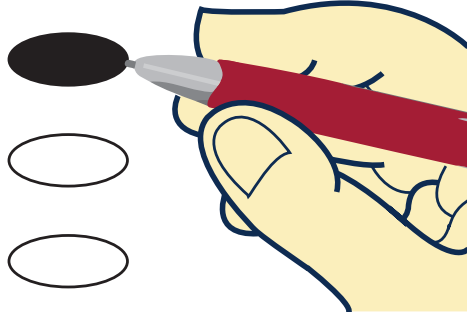
VOTER RESPONSIBILITIES (F.S. 101.031)

Each registered voter in this state has a responsibility to:

1. Familiarize himself or herself with the candidates and issues.
2. Maintain a current address on file with the office of the Supervisor of Elections.
3. Know the location of his or her polling place and its hours of operation.
4. Bring proper identification to the polling station.
5. Familiarize himself or herself with the operation of the voting equipment in his or her precinct.
6. Treat precinct workers with courtesy.
7. Respect the privacy of other voters.
8. Report any problems or violations of election laws to the Supervisor of Elections.
9. Ask questions, if needed.
10. Make sure that his or her completed ballot is correct before leaving the polling station.

PROPERLY MARK YOUR BALLOT

Whether voting by mail, early voting or at a polling place on Election Day, be sure to properly mark your ballot by using a black ballpoint pen to completely fill in the ovals next to your selections.



When you have completed your ballot, carefully review your ballot and make sure all the ovals are filled in next to your selections.

VOTERS WITH DISABILITIES

An ADA-accessible voting machine, the ExpressVote, will be available at each early voting location and Election Day polling place.

This ballot-marking device uses a paper optical scan ballot. It provides voters with disabilities the options of an audio function with a headset, a Braille keypad, a zoom-in large print feature, a sip-and-puff device, and a two-switch paddle device.



NEED ASSISTANCE? WE CAN HELP

If you have any questions, ask a poll worker before you insert the ballot into the scanner. Once a ballot has been accepted, it cannot be retrieved.



PHOTO AND SIGNATURE ID

Florida law requires voters to show both picture and signature ID to vote a regular ballot at an early voting site or at the polls. Without valid and current ID, a voter may vote a provisional ballot, which will be presented to the Canvassing Board to determine eligibility.

Acceptable valid and current forms of ID include (F.S. 101.043):

- Florida Driver License
- Florida Identification Card
- Retirement Center ID
- Public Assistance ID
- Neighborhood Association ID
- Concealed Weapon License
- U.S. Passport
- Military ID
- Student ID
- Debit or Credit Card
- Veteran Health ID Card
- Government Issued Employee ID Card

FLORIDA'S PRIMARY ELECTIONS



Florida is a "closed primary state." A qualified voter is entitled to vote the ballot of the political party with which the voter is registered. Voters registered with no party affiliation (NPA) are not eligible to vote in closed party primaries. All registered voters, regardless of party affiliation, may vote on issues and nonpartisan contests.

If all candidates in a contest have the same party affiliation and the winner of the Primary Election will have no opposition in the General Election, all eligible voters, regardless of party affiliation, may vote in the Primary Election for that contest. This is known as a Universal Primary Contest.

REQUESTING A MAIL BALLOT

Any registered voter may vote by mail. Florida law requires that ALL accepted mail ballots be included in the official final election results.

The deadline to request a ballot be mailed to you is 5:00 p.m. on the 12th day prior to an election.

There are three ways to request a mail ballot:

- Visit VotePinellas.gov/VoteByMail
- Call (727) 464-VOTE (8683)
- Email MailBallot@VotePinellas.gov - Include D.O.B, and either the last four of SS# or DL/FL ID#, address and phone number.

Florida law prohibits supervisors from providing mail ballots to voters or their designees during the mandatory early voting period through 7:00 p.m. on Election Day, unless an emergency prevents the voter from reaching an early voting site or assigned polling place.

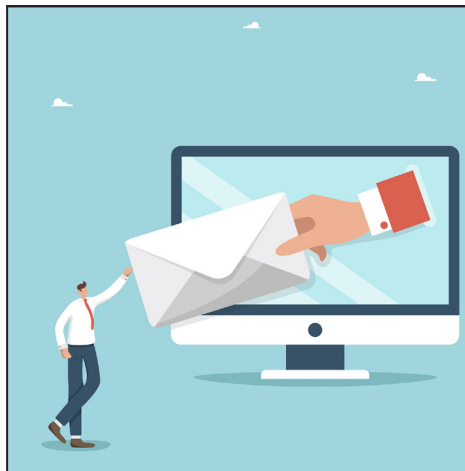
RETURNING YOUR VOTED MAIL BALLOT

To return your voted mail ballot, insert it into the secrecy envelope, then insert the secrecy envelope into the return envelope. Seal the return envelope.

Be sure to sign and date the back of your return envelope.

Ballots may be returned by mail or in person to any Elections Office. Additional ballot return locations may be designated for countywide elections.

A voted mail ballot cannot be accepted at any polling place on Election Day.



FREQUENTLY ASKED QUESTIONS (CONT.)

What happens if I do not vote in every contest?

The ballot scanner will accept your ballot and count only the contests voted.

What happens if I overvote or select too many candidates on my ballot?

If you select too many choices for a contest, known as an overvote, the ballot scanner will alert you. However, an overvoted ballot cannot be corrected. Instead, a poll worker will provide you with a "spoiled ballot" envelope for your first ballot, and issue you a new one for correction and resubmission. See pg 10.

Can I write in a candidate?

Only votes for qualified write-in candidates will be counted.

Can I change my ballot once it has been scanned and accepted by the ballot scanner?

No. Once a ballot has been accepted, it cannot be retrieved.

Is there a paper trail?

Yes. Your paper ballot secured in the ballot box is the official record of your votes and is available for recounts and audits for a minimum of 22 months.

In the event of scanner failure, what happens to my ballot?

You have the option to wait until a replacement scanner arrives or place the ballot in the auxiliary portion of the ballot box to be processed through the scanner after the polls close.

If I receive a ballot in the mail but decide to vote at my polling place, can I do that?

Yes. The simplest way to do this is to bring your mail ballot kit to your polling place and ask a poll worker to cancel the ballot so you can vote at the polling place.

FREQUENTLY ASKED QUESTIONS

Why is Pinellas County using paper ballots?

Florida law requires that all Florida voters use a paper optical scan ballot whether voting by mail, at an early voting site, or at the polls on Election Day.

What voting system does Pinellas County use?

Voters use the Election Systems & Software DS300 (Digital Scanner). The ExpressVote Voter Assist Terminal ballot-marking device is available for voters with special needs or disabilities.

What happens if I make a mistake on my ballot?

Return the ballot to a poll worker and ask for another one. You can have up to three ballots (including original). You will be asked to place your ballot in a spoiled ballot envelope, seal the envelope and give it to a poll worker.

What happens if I make a mistake on the third ballot I am allowed?

State law does not allow you to be given a fourth ballot. Your first two spoiled ballots will be in sealed envelopes, so you will need to use your third ballot.

Does it matter how I insert my ballot into the optical scanner?

No, You can place either end of the ballot into the scanner, with either side up.

How do I know that my votes are being counted?

The scanner screen message indicates your votes are being recorded and your ballot has been accepted.

What happens if I do not vote in any of the contests?

The ballot scanner will alert you if it does not detect any votes on the ballot. You will have the option to accept the ballot as is or have it returned to you for corrections.

RETURNING YOUR VOTED MAIL BALLOT (CONT.)



Voted mail ballots must be RECEIVED at a Supervisor of Elections Office by

7:00 P.M. ON ELECTION DAY
and cannot be accepted at polling places.

Voters are advised to allow at least one week for their ballot to be returned by mail to the Supervisor of Elections Office.

**Voters can track their mail
ballot at VotePinellas.gov.**



PICKING UP SOMEONE ELSE'S BALLOT

By signed letter, a voter may designate another person to pick up his/her mail ballot. The designee must provide a photo ID and complete an affidavit.

It is a felony to distribute, request, or otherwise physically possess more than two mail ballots per election in addition to his/her ballot or an immediate family member's.

What to Expect at the Polls on Election Day



Polls are open 7:00 a.m. to 7:00 p.m. on Election Day

You are required to vote in the precinct in which you reside. Your voter information card provides your precinct number. Check VotePinellas.gov/FindPrecinct to locate your polling place.

Provisional Ballots: Voters who do not provide picture and signature ID, or whose eligibility cannot be determined at the polls, may vote a provisional ballot. Immediately following the election, provisional ballots are researched, and all ballots accepted by the Canvassing Board are included in the official election results.

Voters may make in-state address changes at the polls and vote a regular ballot.



Are You Election Ready?

- Be sure to bring photo and signature ID to the polls.
- Make sure your voter registration information is updated to avoid delays.

(See pg. 5 for a list of acceptable forms of ID and/or directions on updating your voter information)

When you arrive at the polls:

1. Present your valid and current picture and signature ID.
2. Sign the signature pad of the EVID (electronic poll book) with the provided stylus.
3. Receive your paper ballot, black ballpoint pen and secrecy sleeve, and proceed to a voting booth.
4. Use the black ballpoint pen provided to completely fill in the oval next to each of your choices.
5. Review your ballot.
6. If you wish to make changes, request another ballot.
7. If you are satisfied with your choices:

- Put your ballot in the secrecy sleeve provided, and take it to the scanner.
- Insert your ballot in the ballot scanner (see photo to right).
- If your ballot is marked correctly, the scanner will record your votes and deposit your ballot into a locked ballot box.

